

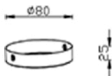
# ENGLISH IP20

## Specification of installation

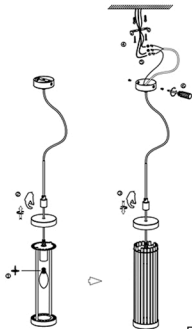
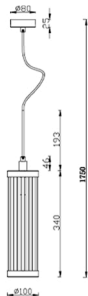
In order to ensure safety use, please notice the following items:

- Read and understand the whole Specification.
- Suitable for the use of 220-240V and 50-60Hz.
- Must be installed on the fixed places and be checked annually
- Please wear gloves as instalment and avoid rot on the surface of plaeting.
- **Please turn off** the lighting source by soft cloth as cleaning prohibited to use of rotted detergent.
- Please connect with the local sales service center when there are any abnormality.

## BASE SIZE:



## FIXTURE SIZE:



- 1 E14 Bulb
- 2 Wall anchor
- 3 Terminal
- 4 Screw
- 5 Holder ring

Product coding: TADEO SP1 D100